

MONTHLY MEMBERSHIP PROGRESS REPORT

LOCATION NEBRASKA

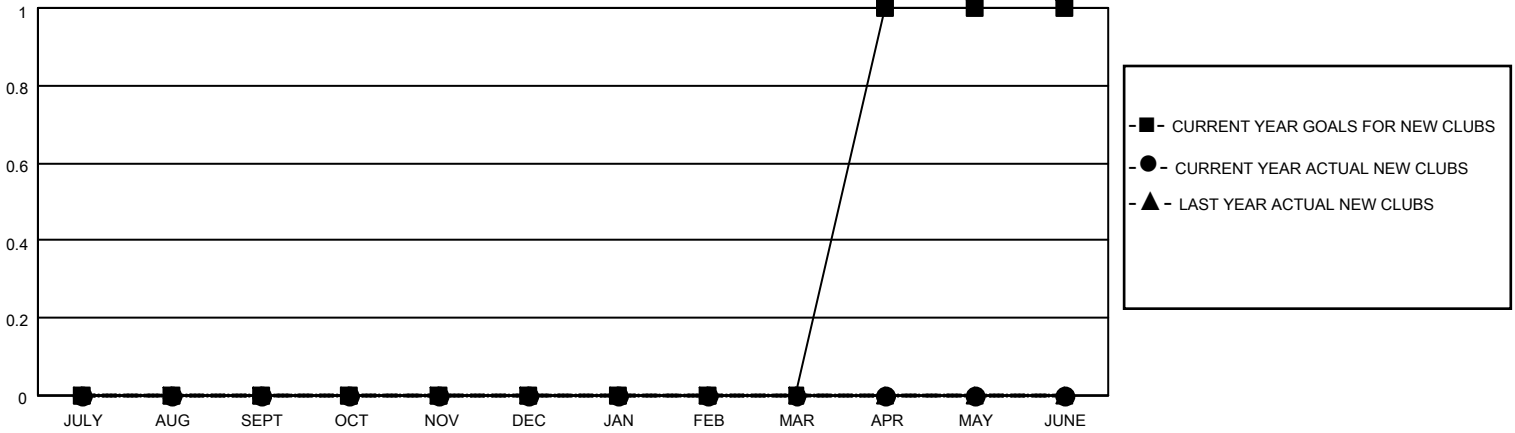
District 38 L

Results as of: 4/30/2021

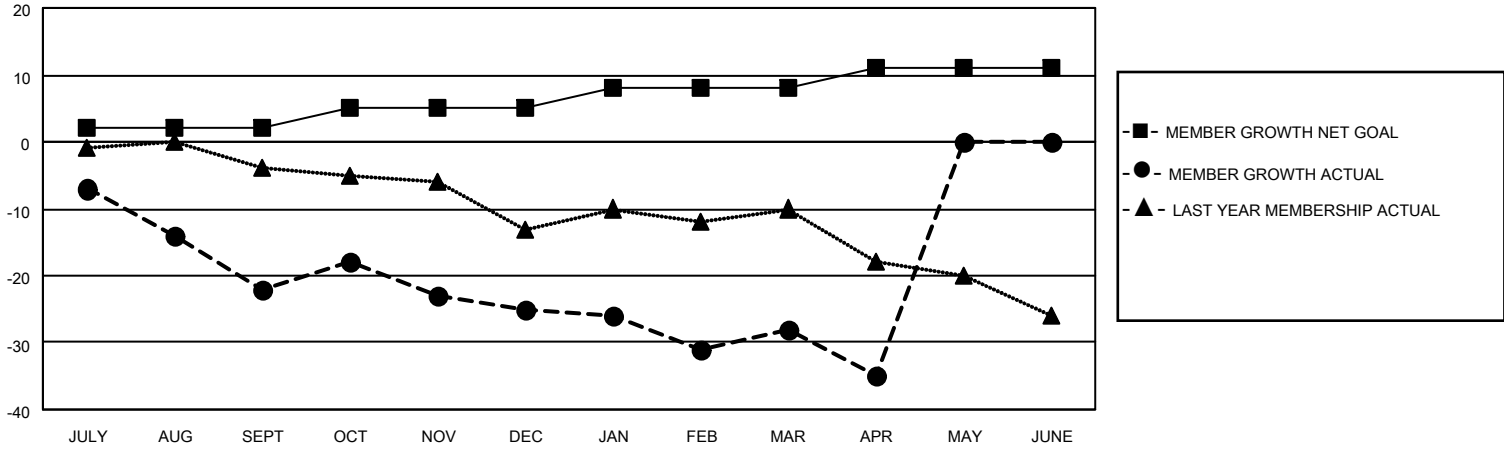
Clubs			
RESULTS FOR 2020-2021			
QUARTER	NEW CLUB GOAL	NEW CLUBS	DROPPED CLUBS
JULY/AUG/SEPT	0	0	0
OCT/NOV/DEC	0	0	0
JAN/FEB/MAR	0	0	0
APR/MAY/JUNE	1	0	0

Members			
RESULTS FOR 2020-2021			
QUARTER	MEMBER GROWTH NET GOAL	MEMBER GROWTH ACTUAL	DROPPED MEMBERS ACTUAL (including transfers)
JULY/AUG/SEPT	2	7	27
OCT/NOV/DEC	3	7	10
JAN/FEB/MAR	3	14	17
APR/MAY/JUNE	3	4	10

GOALS AND ACTUAL NEW CLUBS CUMULATIVE



GOALS AND ACTUAL MEMBERS CUMULATIVE



DROPPED CLUBS: 0	11 CLUBS OF 38 ADDED 1 OR MORE NEW MEMBERS	<u>GENDER DISTRIBUTION</u>
<u>DROPPED MEMBERS</u>	CLICK HERE FOR CUMULATIVE MEMBERSHIP DATA	MALE 587 (74.30%)
DECEASED 16		FEMALE 203 (25.70%)
CLUB CANCELLED 0		TOTAL FAMILY UNIT MEMBERS 182
OTHER 48		FAMILY MEMBERS PAYING HALF DUES 92
TOTAL 64		